

**Leader:**  
Marche Region

**Partners:**  
City of Ancona, City of Fermo, City of Macerata,  
City of Pesaro, City of Porto Recanati, City  
of Recanati, City of Porto San Giorgio, Asp Area 9  
– Jesi.

Project co-financed by the European Union

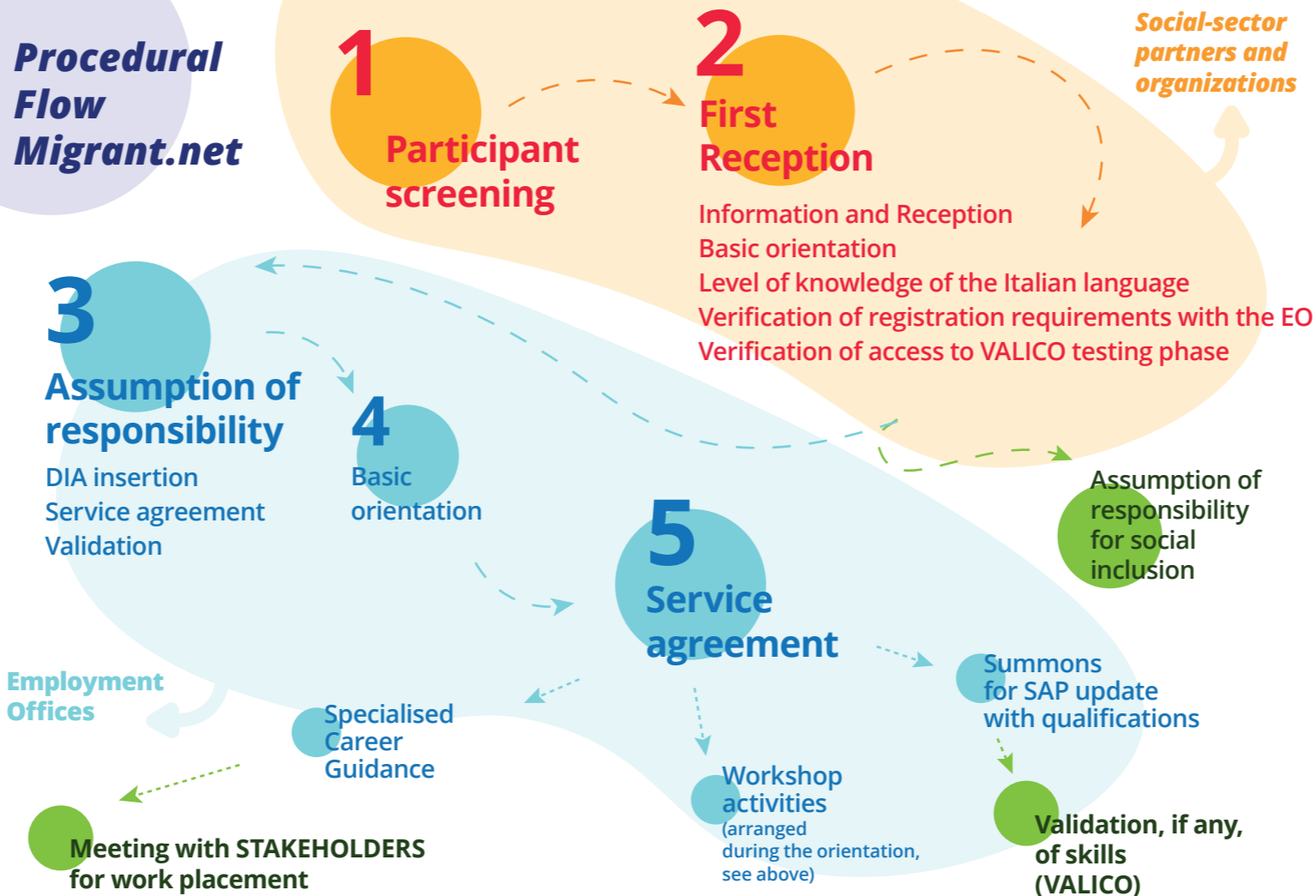


Frame the QR and  
consult the employment  
centers of the Marche  
Region



**useful addresses**  
[www.regione.marche.it/Regione-Utile/Lavoro-e-Formazione-Professionale/Progetto-Migrant-net](http://www.regione.marche.it/Regione-Utile/Lavoro-e-Formazione-Professionale/Progetto-Migrant-net)  
[www.regione.marche.it/Entra-in-Regione/Centri-Impiego/Dai-CPI](http://www.regione.marche.it/Entra-in-Regione/Centri-Impiego/Dai-CPI)

## Procedural Flow Migrant.net



## MIGRANT.NET Project

Asylum, migration and intergration fund (FAMI) 2014-2020



Project co-financed by the European Union



Asylum, migration and integration fund (FAMI) 2014-2020



## Combating social exclusion and supporting employment

The Marche Region, sensitive to social and labour issues, confirms its commitment to vulnerable individuals and enacts support schemes for substantive equality, as

dictated by the constitutional principles of our Republic, the European Union and universally recognised principles.

Project MIGRANT.NET addresses the social and labour market integration of a vulnerable segment of the population, exposed to dangerous situations of marginalisation: foreigners who legally reside in the region.

Migrant employment has declined substantially, and the unemployment rate of foreign nationals is higher than the regional average. The MIGRANT.NET project, therefore, aims to combat unemployment, social exclusion and poverty.

## Objectives



Increase the number of migrants involved in active labour policies, with a focus on the most vulnerable: women, young people, asylum seekers and humanitarian protection holders.

Facilitate access to services by enhancing public and private social networks.

The operating scheme of MIGRANT.NET encourages an integrated model of assuming responsibility for the migrant's social and career welfare, connected with the regional information system for access and traceability of user services.

## Activities



Active policy paths are proposed, service packages such as: assuming responsibility for migrants; group and individual orientation activities; construction and reconstruction of the "curriculum vitae"; skill assessments; valorisation of work and non-work experiences; recognition of qualifications and/or training; identification and validation of skills, including those acquired informally and during the migration journey; planning training actions aimed at strengthening the skills already acquired and offering new ones through traineeships and/or work experience.

Migrants involved in the realisation of individual career placement paths are supported by a network of private social services, associations and organizations.